



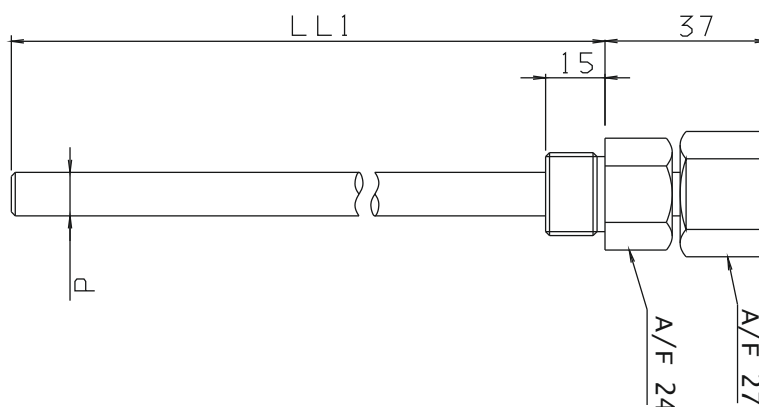
Thermowell

TYPE LOL

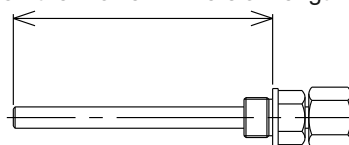
With rotatable union



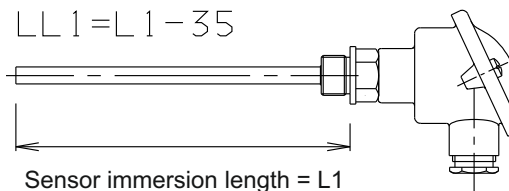
- Thermowells are used in containers, tanks and pipelines for installation/replacement of sensors without having to drain or evacuate the process.
- Material for thermowell is stainless steel AISI 316L.
- Available with pressure certificate up to 75 bars.
- Immersion sheath $\varnothing 12/\varnothing 11/\varnothing 9$ with wall thickness of 1 mm.
- Rated torque: 50 Nm.



LOL thermowell immersion length = $LL1$



$$LL1 = L1 - 35$$

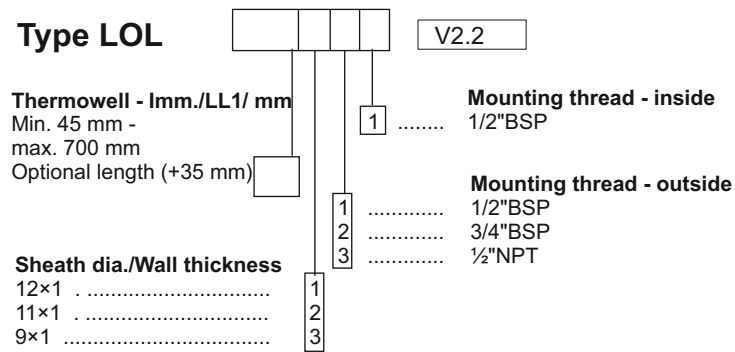


Ordering: See ordering form on back page



ORDERING FORM / THERMO COUPLE TYPE LOL

Type LOL



Head office:

Senmatic A/S
Industrivej 8, 5471 Søndersø, Denmark
Phone: +45 64 89 22 11
dk@senmatic.com - www.senmatic.com